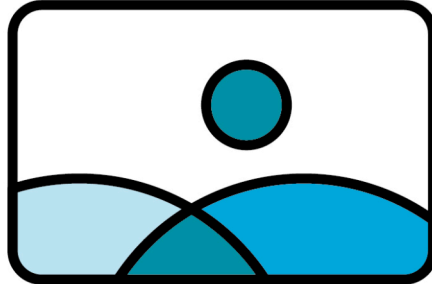


Action Town



Research and Action for SCP

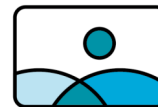
Better & New Civil Society Strategies to Tackle the Sustainable Consumption and Production Challenge? Roadmapping ...

Workshop in Wuppertal, 11-12 March 2010

Workshop agenda, practical information and participant list

Final version





Welcome to Wuppertal!

Dear workshop participant,

To facilitate your stay in Wuppertal, we have prepared a document that contains most of the information you will need for the workshop in Wuppertal. It contains (1) The workshop agenda, (2) Practical information on how to get here and how to find your way around Wuppertal, and (3) Updated participant list, -all in a handy format that you can print out and bring along.

We hope this answers most of your questions. For further doubts, you can contact us at actiontownroadmapworkshop@scp-centre.org or call Project Assistant Helene Gallis on (+49) 202 4595 834.

In emergencies *during the workshop days* you can also contact us by phone:

Helene (+49) 17635773796 (private mobile)

Nora (+49) 1794522941 (private mobile).

Best regards,

The Action Town Roadmap Workshop Team,

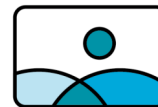
Workshop agenda

Key workshop question

- How can we make best use of our collective knowledge and existing thinking, and develop and define an agenda for collaboration between academia and NGOs? How can such an agenda for collaboration provide NGOs with better knowledge and capacity for more effective strategies and tactics?

Objectives of the workshop

- Get a common understanding of the purpose for building the workshop roadmap



- Crystallize key domains where NGOs can increase their knowledge and capacities for better and new strategies
 - Develop the roadmap that defines what actions to take in order to achieve these improvements.
-

Agenda, Day 0 – Wednesday 10th

20:00 Informal get-together for food and drinks in the restaurant “Al Howara” located in Bembergstrasse 20, off the Bundesallee and halfway between the hotel and the bus station. Those interested can meet up in the hotel lobby at 19:45 and we’ll go there together.

Agenda, Day 1 – Thursday 11th

09:00 Welcome & tour the table

09:20 Overview of the project and objective of the workshop

09:45 Challenge & debate the Action Town Roadmap discussion paper.

Break

12:00 Map the domains where NGOs can improve their knowledge and capacities

13:00 Lunch

14:00 Crystallize and discuss key domains where NGOs can develop knowledge and capacity for better and new strategies. Explore ideas for a roadmap for each area:

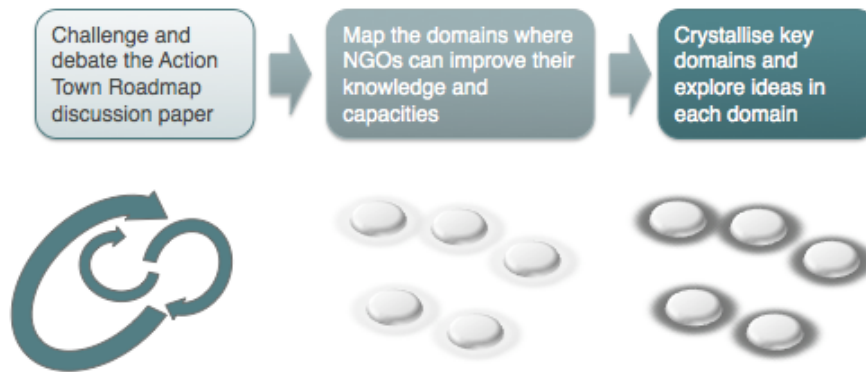
- What would be needed to develop the domain further?
- Which other initiatives / dynamics could be used?

Break

16:30 Share results, agree on domains and explore potential different viewpoints.

18:00 End

19:30 Joint Action Town workshop dinner, courtesy of the organizers. Place to be confirmed.



Agenda, day 2 – Friday 12th

09:00 Recap from Day 1

09:15 Digging deeper in the key domain areas and discuss different viewpoints from day 1 – continued.

Break

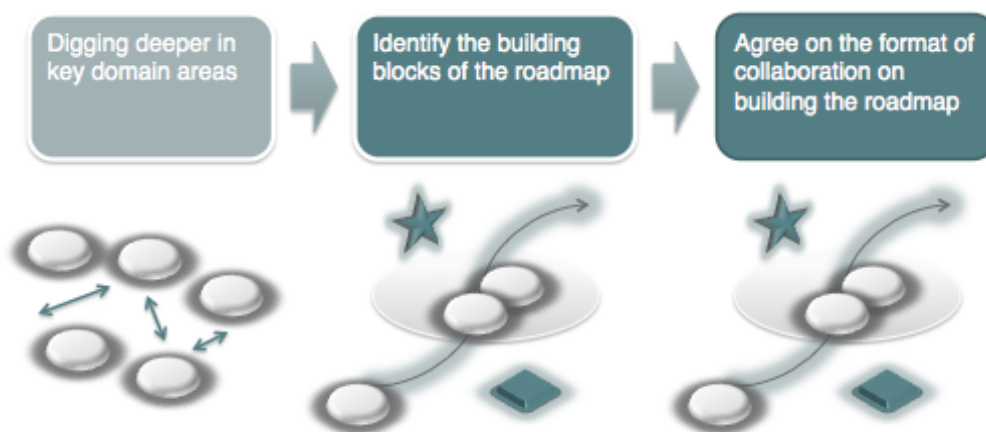
11:15 Identify “building blocks” for the roadmap. Discuss possible ways of collaboration.

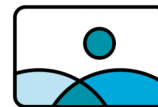
12:30 Lunch

13:30 Agree on the format of collaboration on building the roadmap

Break

16:30 Wrap up





Travel information

Arriving by plane

When arriving by plane via either Düsseldorf or Cologne/Bonn airport, the easiest connection to Wuppertal is via train. In the airport you follow the train-signs until you reach the airport train station. From the airport you need to go to the main railway station (“hauptbahnhof”) of Düsseldorf or Cologne respectively, where you in most cases will have to change train to get to Wuppertal. Some Cologne-trains, especially IC/ICE trains don’t stop at the hauptbahnhof, meaning that you will have to change trains in the smaller “Köln Messe/Deutz” station.

Travelling by train

Tickets can be bought from the multilingual DB ticket machines. For trainschedules you can check online at the Deutsche Bahn [website](#). or you can also look at the yellow train schedule posters that are everywhere in the trainstations, and that also clearly indicate the platform that the trains leave from. A ticket one way from either one of the airports to Wuppertal Hauptbahnhof costs around €5-10. The trainstations also have service desks (Reisezentrum) where they are very helpful. Both Düsseldorf and Cologne are about 30-40 minutes from Wuppertal by train, and trains leave approximately every 15-20 minutes. IC/ICE trains are quicker, RE/RB/ S-bahn are local trains that take a bit longer. Some trains stop at various Wuppertal-stations, please make sure you get off the train in Wuppertal Hauptbahnhof (hbf).

Arriving in Wuppertal

As you arrive in Wuppertal main train station you should exit on the upper level (same level as McDonalds and IhrPlatz convenience store) if you want to take a taxi. However, Hotel Ibis is located only a few minutes by foot from the train station. In that case you go to the lower level of the train station and go through the pedestrian tunnel. Right before you exit the tunnel you will see a sign to the right indicating the bus station, follow this up some short stairs. As you look straight ahead (“through” the bus station) you will see Hotel Inter City ahead of you, and further behind it you will see the CineMaxx complex. Hotel Ibis is located 200 m further down that road, on the opposite side of the CineMaxx. From the bus station you walk along Bundesallee; halfway between the train station and the hotel you will also pass Bembergstrasse on the left, which is where Al Howara, the restaurant for our Wednesday evening get-together is located.. Hotel Ibis is located on Bundesallee where this road meets two other smaller streets; Hofaue and Wupperstrasse.

Accommodation

All workshop participants are staying in Hotel Ibis. The hotel is located in the centre of Wuppertal, close to the main train station. The address of



the hotel is Hofaue 4, 42103 Wuppertal, and they can be reached by phone on +49 202 870 40. **Your reservation is valid until 7pm, if you think you will arrive later, please contact the hotel to leave your credit card information so you won't lose your reservation.**

How to get to the workshop venue

The workshop is taking place in the building where CSCP has its offices. It can be reached easily by foot, by public transport, taxi and car. Below you will find detailed descriptions.

Venue address



UNEP/Wuppertal Institute Collaborating Centre on Sustainable Consumption and Production (CSCP), Hagenauer Strasse 30, 42107 Wuppertal

Phone: (+49) 202 495 5810

The CSCP is located in a beautifully restored historical factory building; the “Huppertsberg Fabrik”. Enter the main entrance (on the long side of the building) and take the elevator down to the

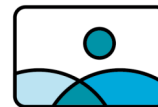
conference room in the “-2” level of the building. Make sure you mark “minus” and “2” to get to this lower level.

Walking

By foot it will take you around 15-20 minutes from Hotel Ibis to the workshop venue. If you are interested in walking, please let us know and we will pass you a map on Wednesday evening and explain the easiest route.

Public transport / bus

There are plenty of buses that go directly from the bus station near the hotel, to bus stops near the CSCP. Please take into consideration that from the bus stop to the CSCP one must hike up some very long and steep stairs that are quite strenuous. The bus ticket you must buy from the driver.



Option 1: Take bus no. 623 (direction "Sonnenblume", platform 4 and 5). The journey in the bus takes eight minutes.

Get off the bus at the stop "Weißenburgstraße" in the "Lothringer Straße". Please go straight until you reach the "Kieler Straße". Turn left into the "Kieler Straße", then walk straight. The first street on your right is "Hagenauer Straße".

Option 2: Take one of the following buses. The journey in the bus takes six minutes.

- ✓ Bus no. 620 (direction Wuppertal "Kuckelsberg", platform 5)
- ✓ Bus no. 625 (direction Wuppertal "Am Handweiser", platform 5)
- ✓ Bus no. 635 (direction Wuppertal "Markland", platform 5)
- ✓ Bus no. 645 (direction "Raukamp Schleife", platform 4)

Get out off the bus at the stop "Schleswiger Straße". Please turn right into the "Schleswiger Straße" and go upstairs (Wülfingtreppe). At the end of the stairs, please turn left and you will see the venue building.

Taxi

For taking a taxi, please have the receptionist at the hotel order one for you, or go to the taxi stop outside the train station. To reduce traffic congestion and pollution we recommend that you share your taxi with other workshop participants if possible. The Wuppertal "Taxi Zentrale" can be reached on phone (+49) 202 27 5454 – if calling from a foreign phone , or 0202 27 5454 if you are calling from a German phone.

By car

Coming on the A46, use exit No. 34 "Wuppertal-Elberfeld", follow the direction University / Center W.-Elberfeld. After 300m turn right into Opphofer Straße. Follow this street for about 500 m and then turn right into Hagenauer Straße. Follow this street till the end, you will find the CSCP in the brick building.



Participants

These are the people that have confirmed their attendance, as of March 10, 2010:

Name	Organization	Role
Andri Stahel	UNESCO Chair of Sustainability in Spain and Technical University of Catalonia (UPC), Spain	Associate professor
Betsy Taylor	Breakthrough Strategies and Solutions	Founder and president of Breakthrough Strategies & Solutions, Founder of 1sky.org and Center for a New American Dream
Chris Church	The Northern Alliance for Sustainability (ANPED)	Co-chair of ANPED, co-founder Community En
Christian Löwe	German Federal Environment Agency , Environmental . Innovation Programme, Germany	Policy Advisor Sustainable Consumption
David Fell	Brook Lyndhurst, UK	Director
Doreen Fedrigo-Fazio	European Environmental Bureau (EEB), Belgium	EU Policy Unit Coordinator
Eleni Sotos	Funders Workgroup for Sustainable Production and Consumption (The Sustainability Funders), USA	Coordinator
Erik Assadourian	Worldwatch Institute, USA	Senior Researcher and Project Manager, State of the World 2010; "Transforming Cultures"
Fritz Reusswig, Dr.	Potsdam Institute for Climate Impact Research, Germany	Researcher, sociologist
George Por	Community Intelligence Ltd., UK	Founder and Chairman of Community Intelligence; Visiting Researcher, London School of Economics
Magda Stoczkiewicz	Friends of the Earth Europe	Director
Remi Parmentier	The Varda Group, Netherlands/Spain	Founder and Director, and one of the founders of Greenpeace International
Sarah Bladen	WWF International, Switzerland	Director, Conservation Communications



Name	Organization	Role
Sylvia Lorek	SERI, Sustainable Europe Research Institute, Germany	Head of Germany Office of SERI, Researcher and Policy Consultant in Sustainable Production and Consumption
Tom Crompton	WWF-UK	Change Strategist
Victoria Johnson	New Economics Foundation (nef)	Senior Researcher
Wolfgang Meyer, Dr.	Center for Evaluation, University of the Saarland, Germany	Senior Policy Advisor
Wolfgang Sachs, Prof. Dr.	Wuppertal Institute, Germany	Head of Berlin Office of the Wuppertal Institute; Honorary Professor at the University of Kassel

Project collaborators

Andrew Simms	New Economics Foundation (nef), UK	Policy director and Head of the Climate Change Programme
Annie Leonard	www.storyofstuff.com , USA	Researcher and Activist
Bill Vorley	International Institute for Environment and Development (IIED)	Head, Sustainable Markets Group
David Willans	Futerra, UK	Communication Strategist
Felix Ekardt, Prof. Dr.	University Rostock, Germany	Professor for Public Law. Research Group Sustainability and Climate Policy
Harriet Williams	JMG Foundation	Researcher
Ian Christie	Green Alliance, UK	Associate; Visiting professor, Centre for Environmental Strategy, University of Surrey
James Gustave (Gus) Speth	Yale School of Forestry and Environmental Studies, USA	Dean